



# Walkable Warren

“WALKABLE WARREN”

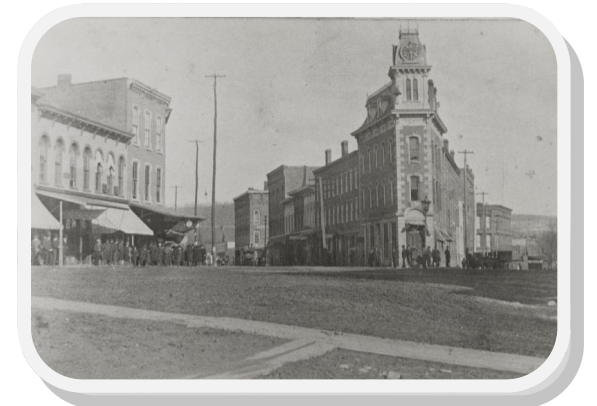
Walkable Warren is a local initiative intended to promote healthy lifestyles by encouraging pedestrian and bicycling as alternative modes of travel in and around the City of Warren. Warren has a wealth of scenic landscapes, historic architecture, public parks, and trails, all worthy of showcasing and that are best experienced on foot or by bicycle. Recommended routes of travel between the Warren/North Warren Bike/Hike Trail, core downtown, and a few of our public parks are marked by Walkable Warren signage along our public streets. We encourage you to step out of the automobile as a source of travel, and instead, experience Walkable Warren on foot or by bicycle. Pedestrians should use the sidewalks. Bicyclists must obey all traffic laws.



View of Second Avenue where it meets Pennsylvania Avenue (formerly Water Street) in 1868. The wood frame, two-story building behind the tree was one of the locations where early terms of court were held. The wood frame structures that line that side of the block were later replaced with the brick buildings that stand today. The Beecher and Copeland Hardware Company occupied part of the brick Watson-Davis Building on “The Point”.



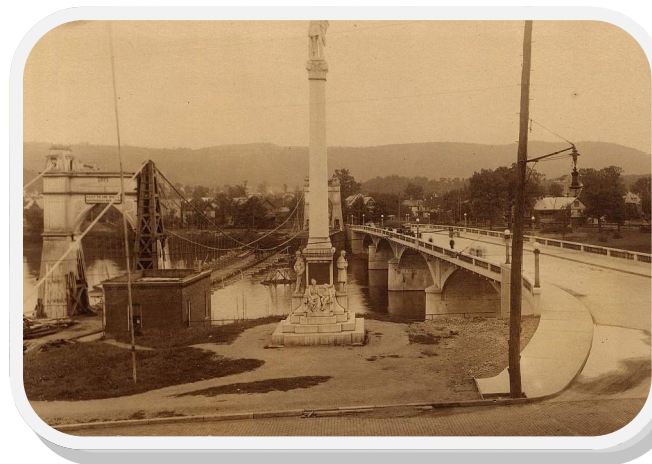
Intersection of Pennsylvania Avenue (formerly Water Street) and Hickory Street in 1868. At the far end is “The Point”, where Second Avenue meets Pennsylvania Avenue. The stacked lumber in the foreground was used in building part of the 400 block of Pennsylvania Avenue, west of the intersection. The Allegheny River is just beyond view of the right side of the photograph.



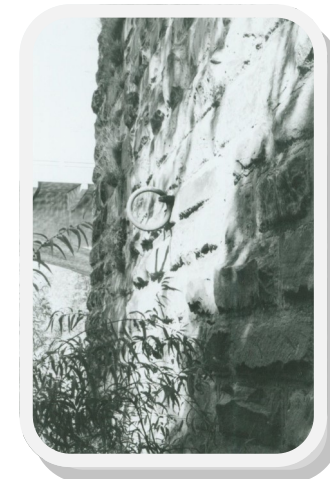
The “Point”, as it appeared in the late 1880’s. The building and the others directly behind it, the Watson-Davis block, were destroyed in a February 1889 fire. They were replaced in 1891 by the buildings that stand today.



North end of the 1871 suspension bridge, and the original toll booth, during the flood of 1873. A full-size Allegheny Lumber Raft stands ready at right for departure down-river.



Tearing down the 1871 suspension bridge on completion of the concrete bridge at Hickory Street, 1918. The Soldiers and Sailors monument was erected in 1909.



During the Lumber Rafting days, mooring rings were attached to the abutment of the Hickory Street “Suspension” Bridge to secure the rafts until ready to make the journey down-river. When the 1871 Suspension Bridge was dismantled, the abutments were preserved and the north abutment now serves as the base for the concrete stage in Soldiers and Sailors Park across the avenue. The mooring ring pictured above can be viewed from the base of the steps leading to the Breeze Point Park area below.



The “Point” today with the recently added fountain.

## The “Point”...yesterday and today!

*Photos provided by:*

*The Warren Public Library and*

*The Warren County Historical Society*



**pennsylvania**  
DEPARTMENT OF CONSERVATION  
AND NATURAL RESOURCES

